



& Nature

TSUTSUMI ASAKICHI URUSHI Inc.

堤浅吉漆店



きれいな地球とともに
漆を次世代へ



(株) 堤浅吉漆店
堤卓也

Since 1909



First Generation | TSUTSUMI ASAKICHI
Great-Grandfather



4th Generation | TSUTSUMI TAKUYA
I'm a father of two who loves surfing.

Factory



A refining factory with over 100 years of history

In the early days, Urushi was refined by hand.







Urushi is the sap of a tree.







Features of lacquer ware (shikki)

漆器(shikki)
= Lacquer ware

- Durability
- Heat Insulation
- Antiseptic
- Waterproof



How Urushi is used.



Urushi is used not only as a paint but also as an adhesive. Nowadays, it can be seen in Buddhist statues and temple architecture.



Kinkakuji Temple

金継ぎ



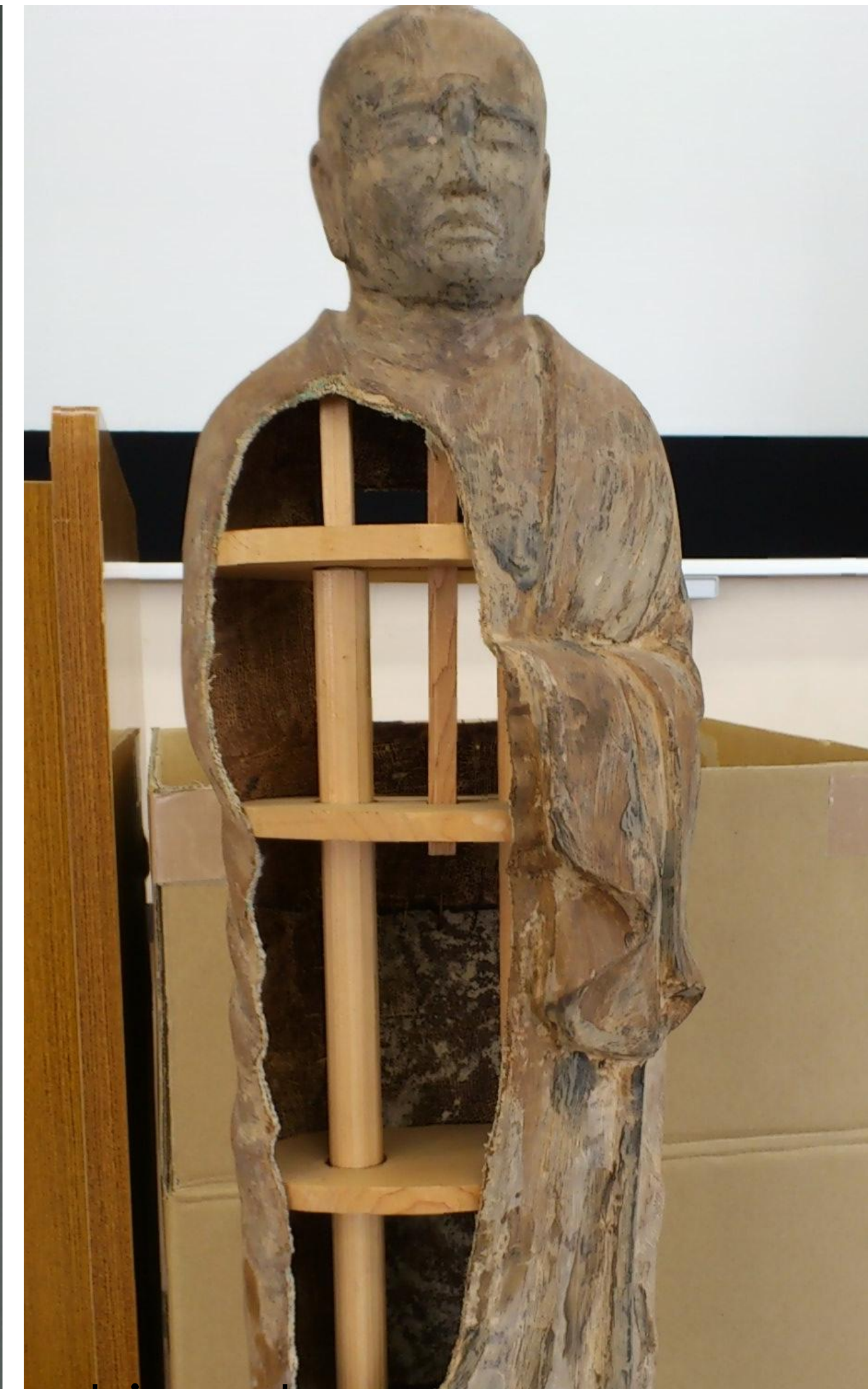
- モノを大切にする心
- 傷痕を景色として楽しむ



Urushi as a structural material



The Ashura statue was created in 734.



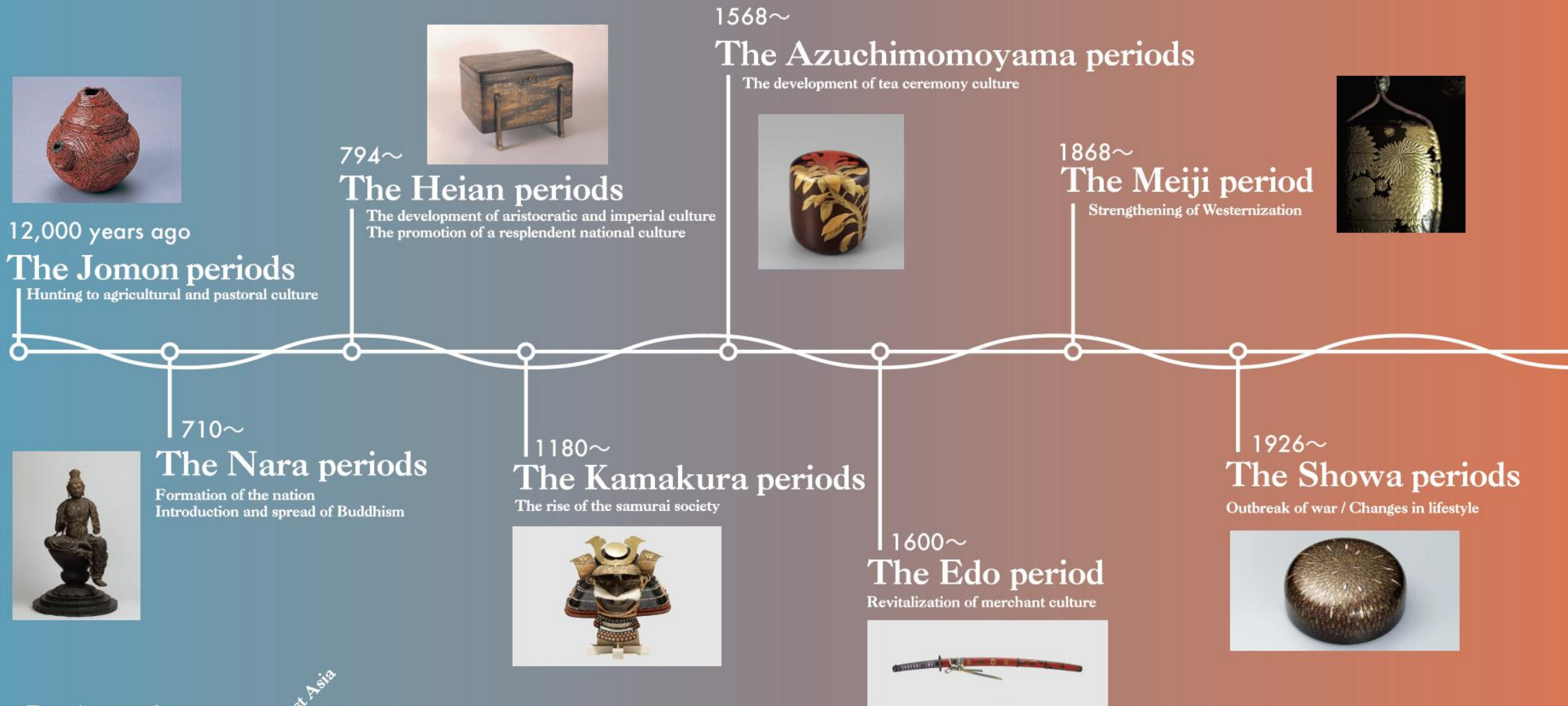
Dry Urushi: technique of making sculpture using Urushi and hemp.

Restoration of cultural properties



Our Urushi is used in many national treasures, and its share is 70%.

History of Urushi



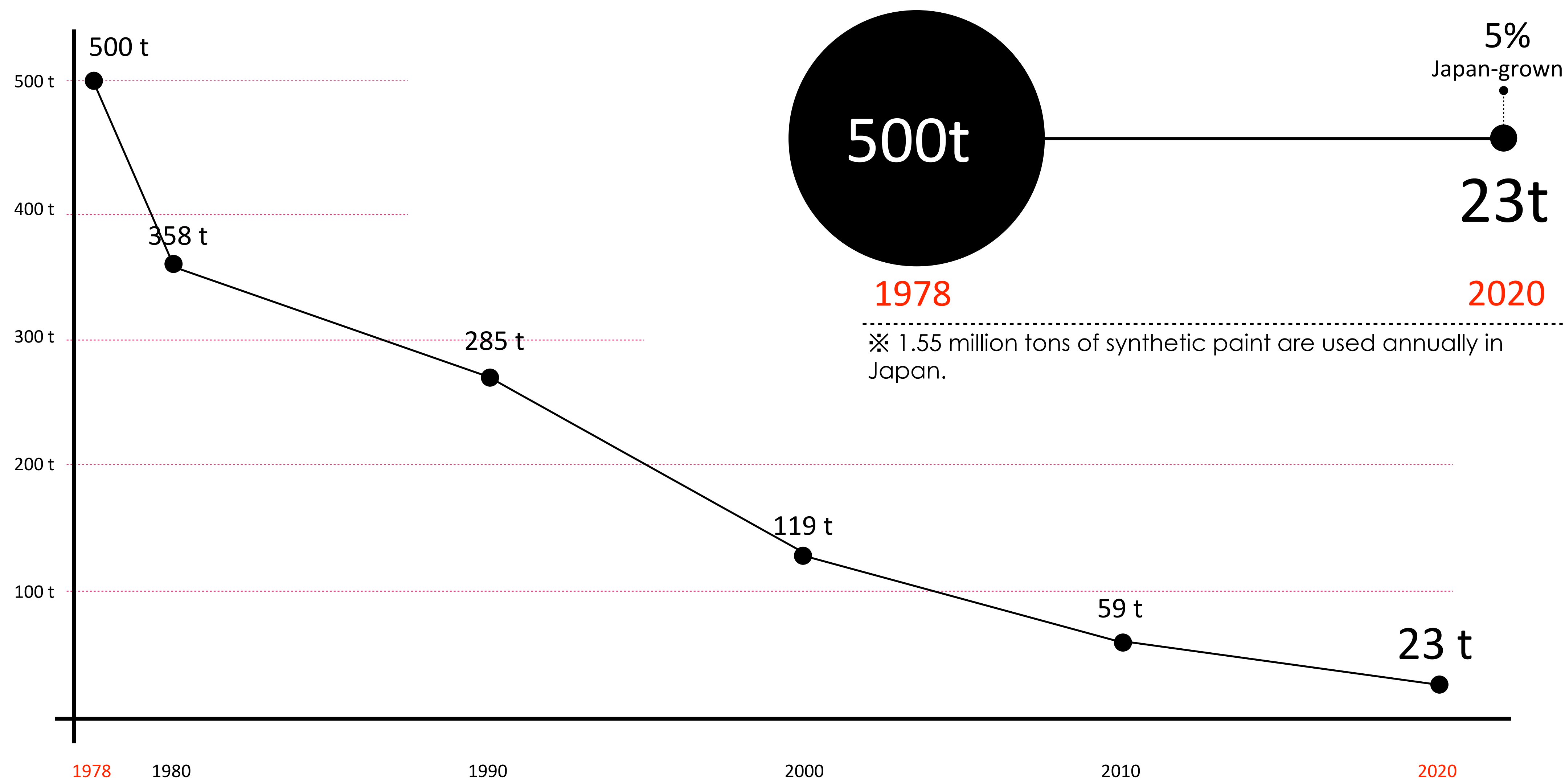
In America



I came to love the charm of Urushi as a material



A graph of the amount of Urushi used in Japan



'Urushi no Ippo' (One Step of Urushi).



- The brilliance of Urushi as a material
- A sustainable resource
- The power to nurture the human spirit



BEYOND TRADITION

Conveying the allure of Urushi across nations and generations
Exploring new possibilities and values of Urushi



URUSHI×SKATE







URUSHI×BMX







URISHI×SURF















BEYOND TRADITION

We produced a short film and participated in a film festival.



Surf Film Festival in Florida





BEYOND TRADITION

From Surfing to Traditional Crafts



Wegener Surf Stay in Kyoto

BEYOND TRADITION

Wegener Surf Stay in Kyoto



This project has provided connections with a variety of people



Planting, nurturing, creating, and using.

Manufacturing that circulates actions
The human ecosystem is what makes
this cycle possible

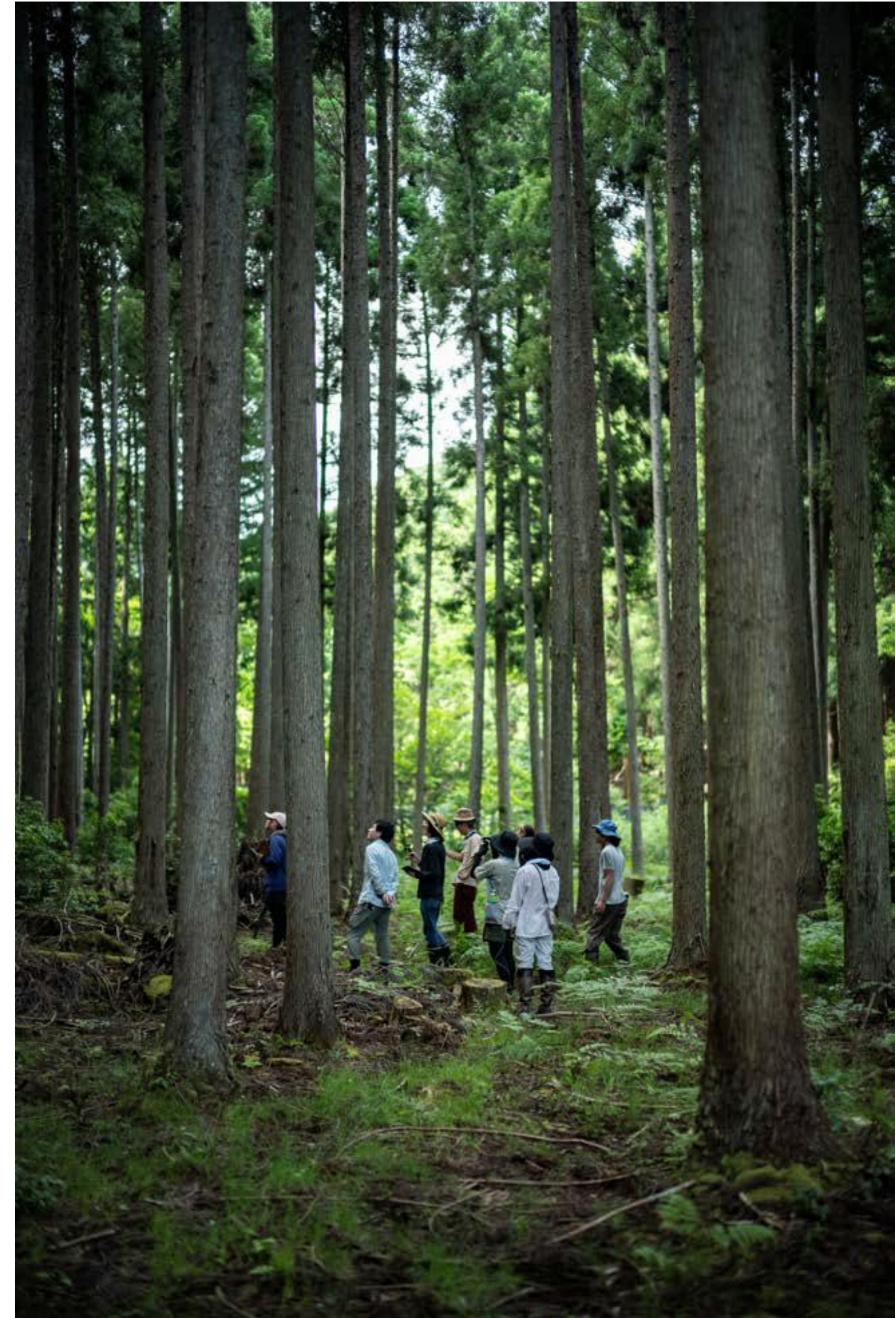


Urushi Planting



Planting Urushi trees





A tour to experience urushi tree planting and the forest

A Surfboard Crafted with Urushi



siita



Wood Surfboard Shaper Rodrigo Matsuda



Urushi Refiner Takuya Tsutsumi

TSUTSUMI ASAKICHI URUSHI Inc.





siita























Asagi-wan (bowl) Project

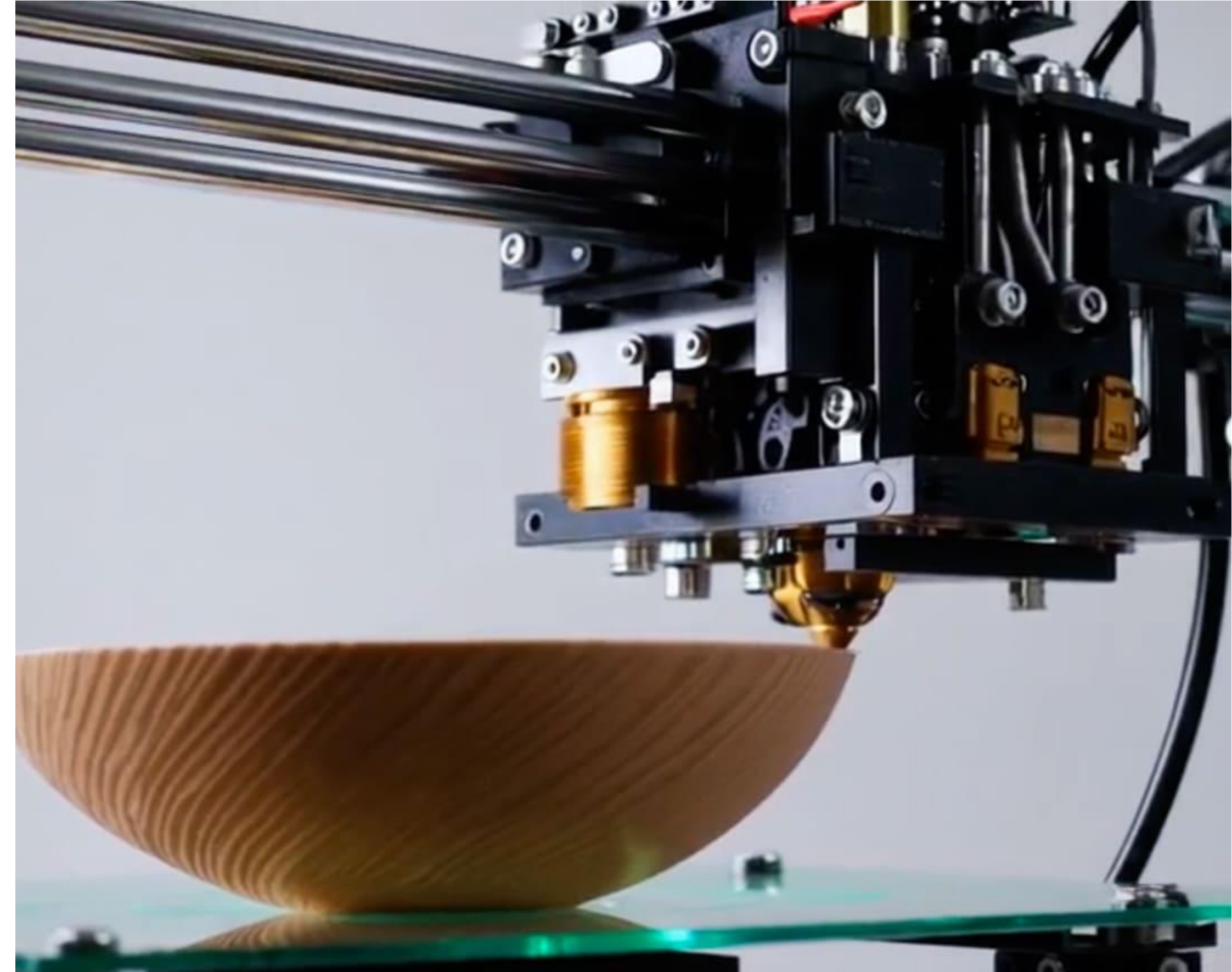
Preserving the craftsmanship of
woodworkers and lacquer artisans
Aiming for sustainable production
within the local community



FAB VILLAGE KEIHOKU



漆×PLA×3Dプリンター



漆×PLA×3Dプリンター



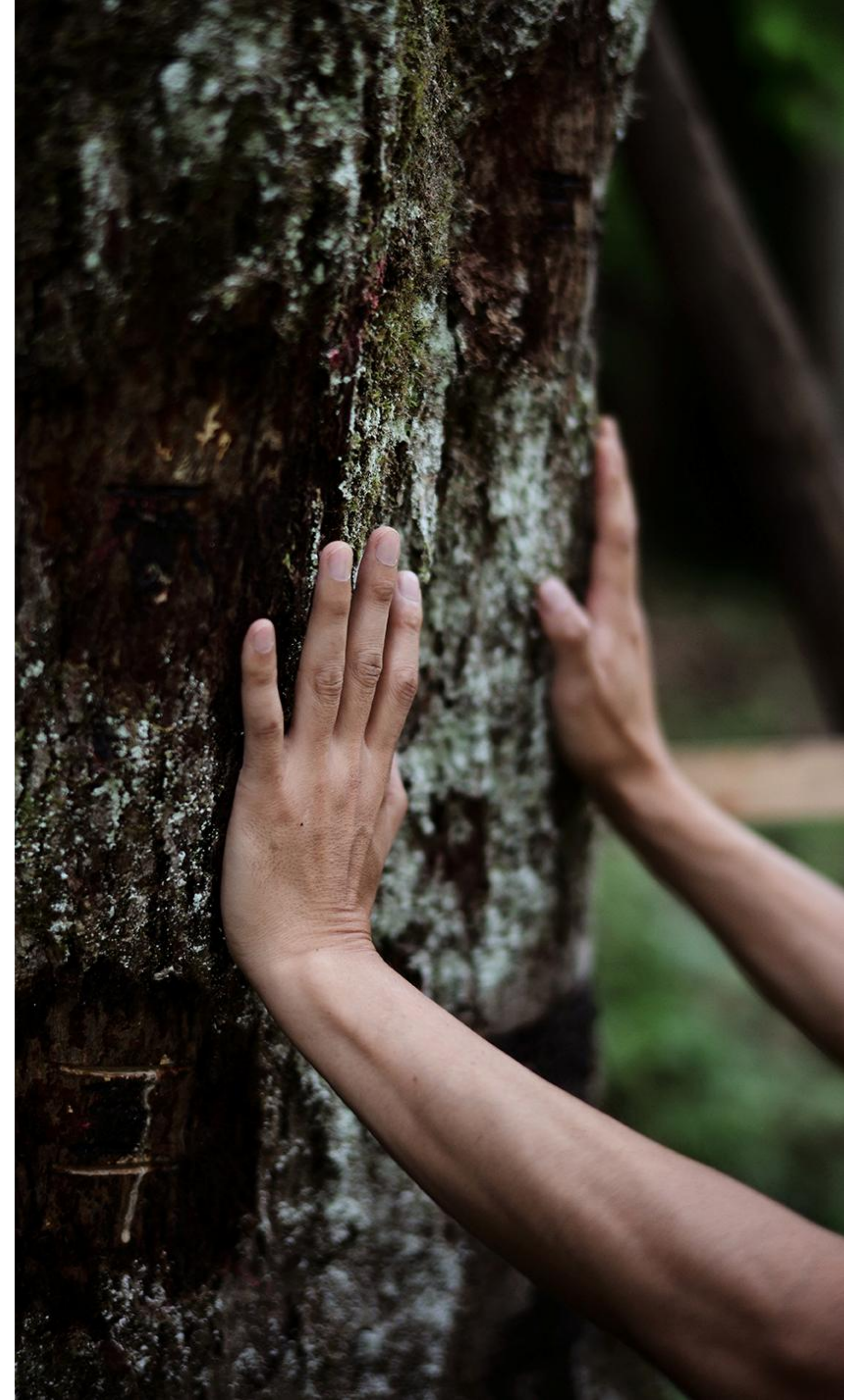
Bears Wood Project



**BEARS
WOOD
PROJECT**



Urushi Tree Project









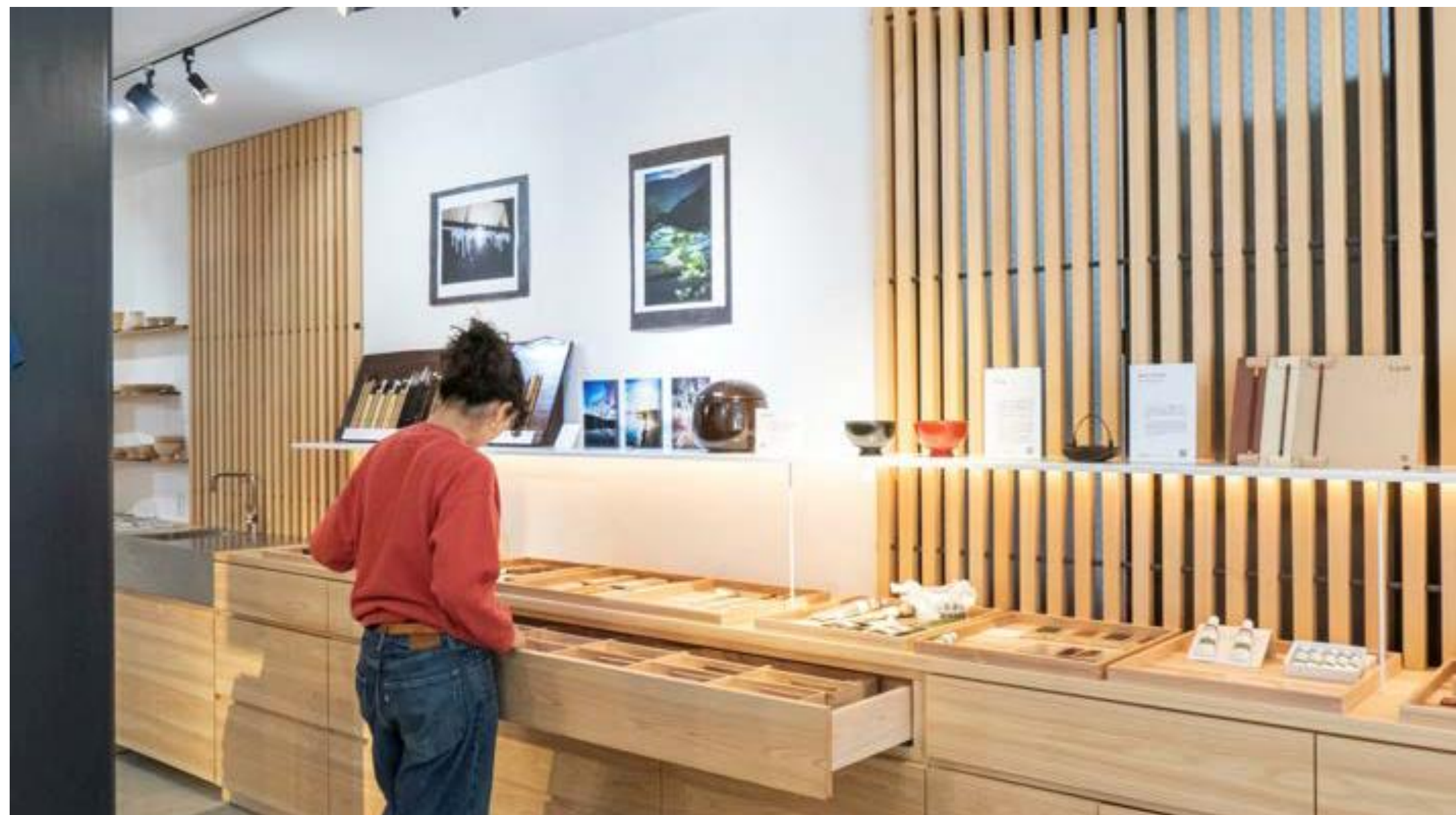
Urushi dyeing



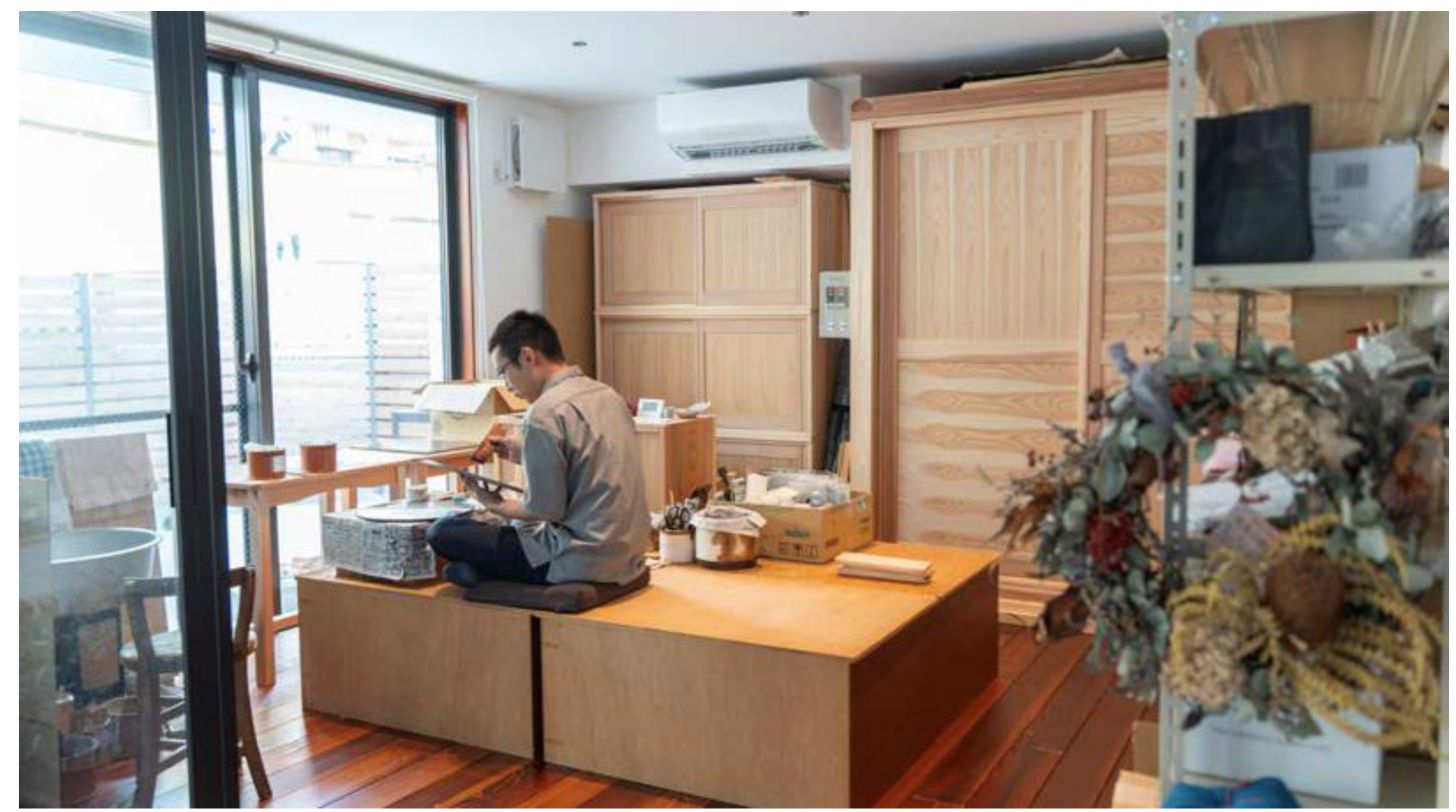
Urushi Ink



Urushi + and = Und.



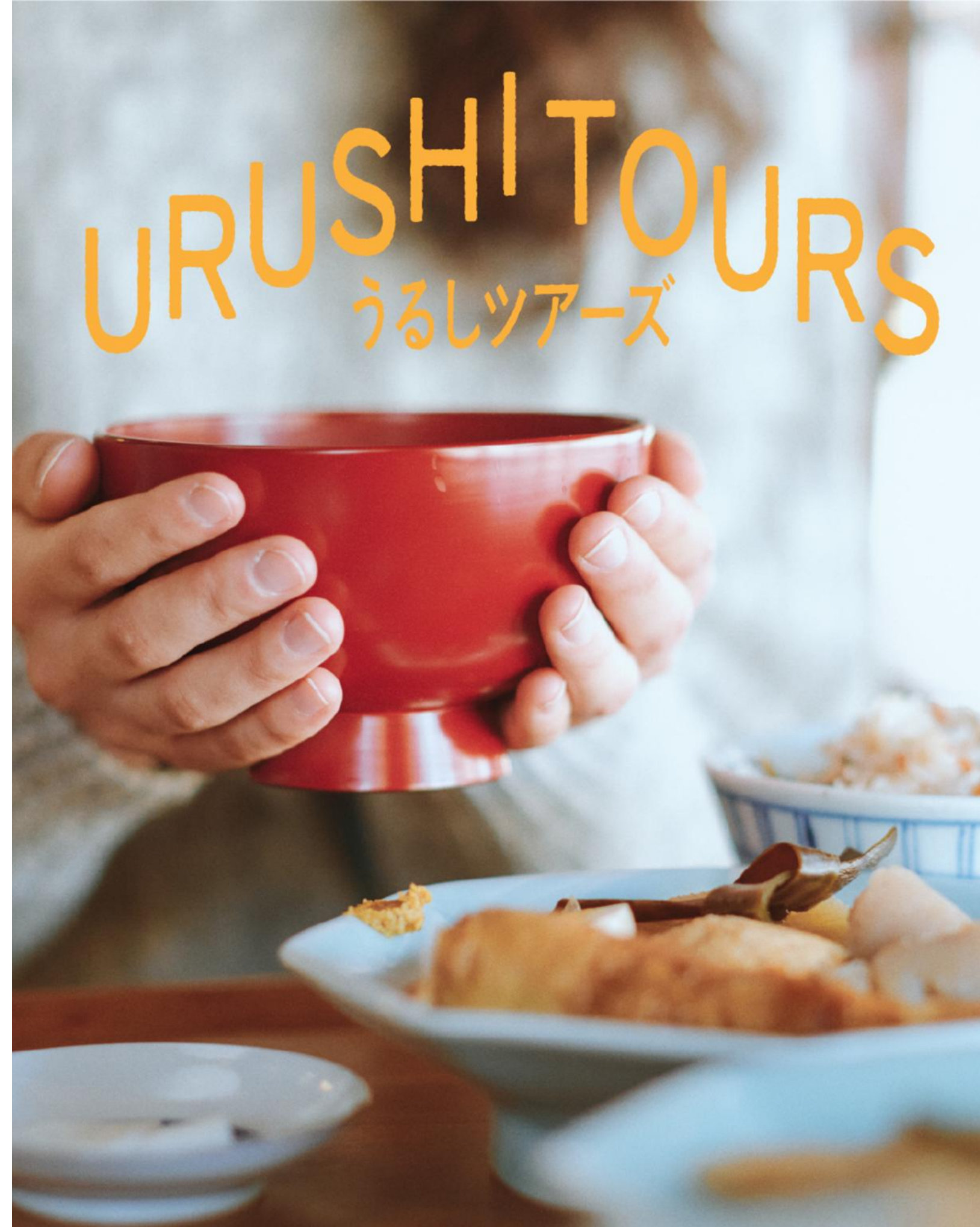
Urushi + and=Und.



Und. Factory tour



URUSHI TOURS



漆祭URUSAI

漆祭

Too loud to be traditional.

URUSAI

2025.11.7 (金)
→ 11.15 (土)
漆の日 = 11月13日(木)を含む9日間

メイン会場 Und. | 堤浅吉漆店
京都市下京区稻荷町540

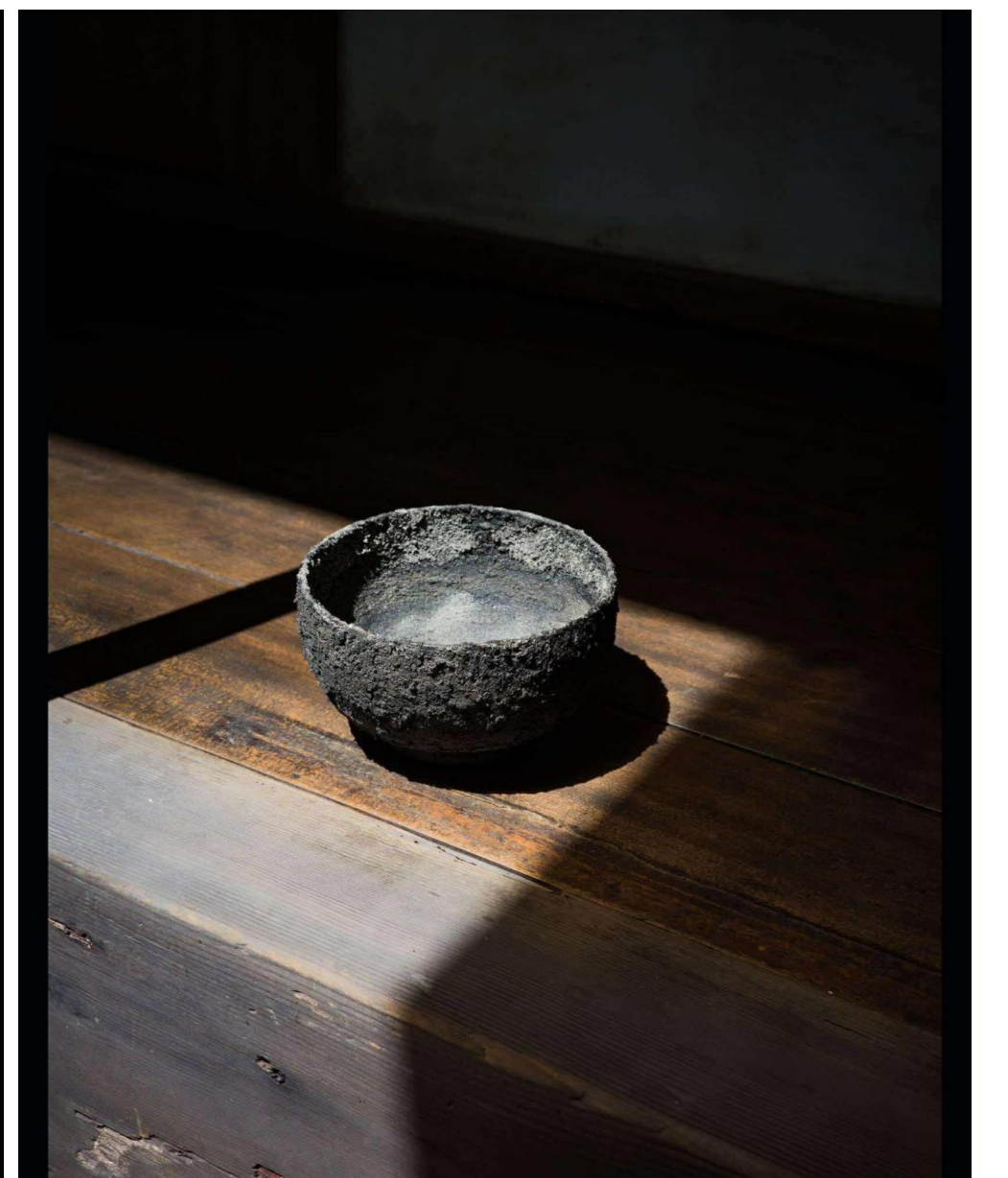
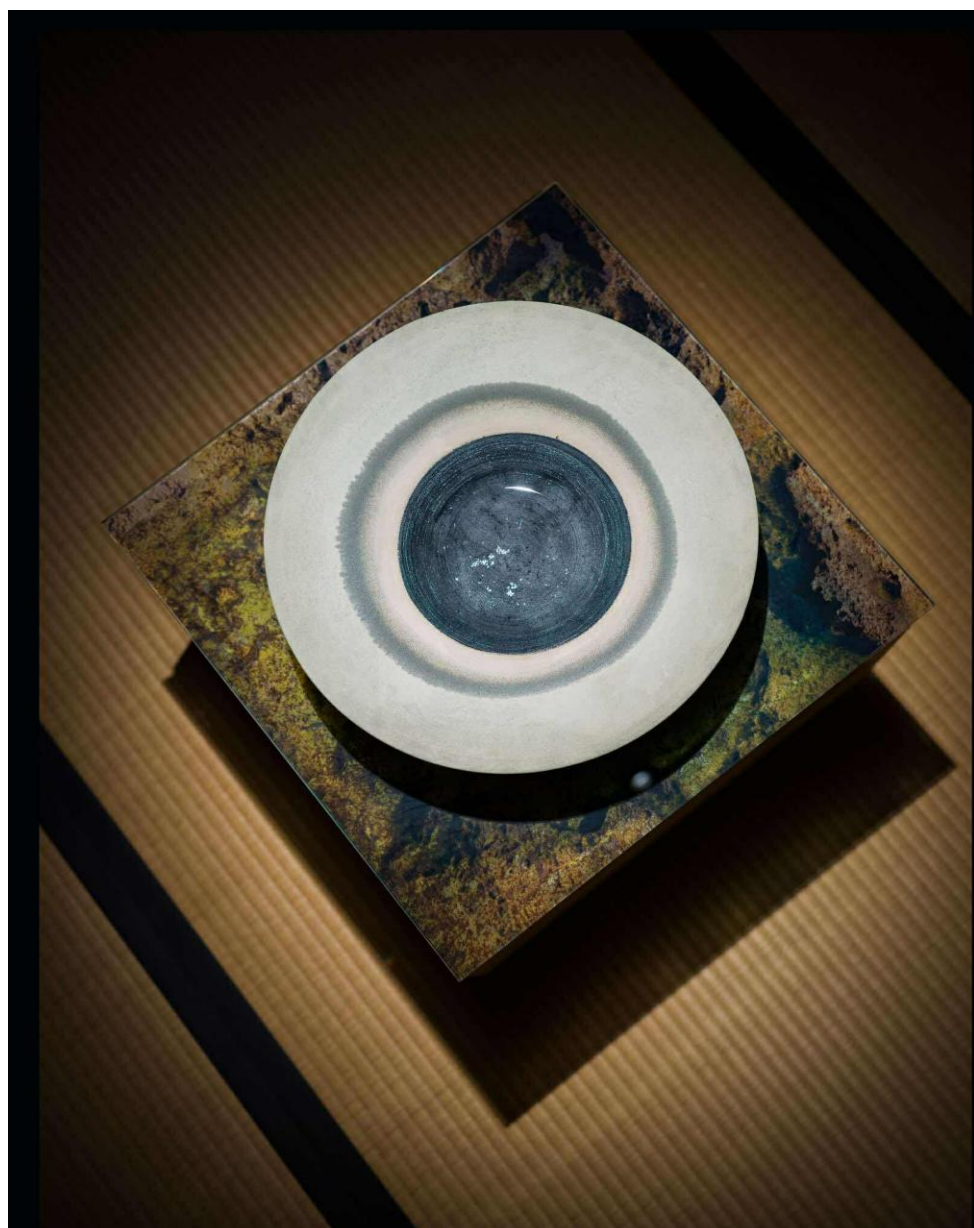
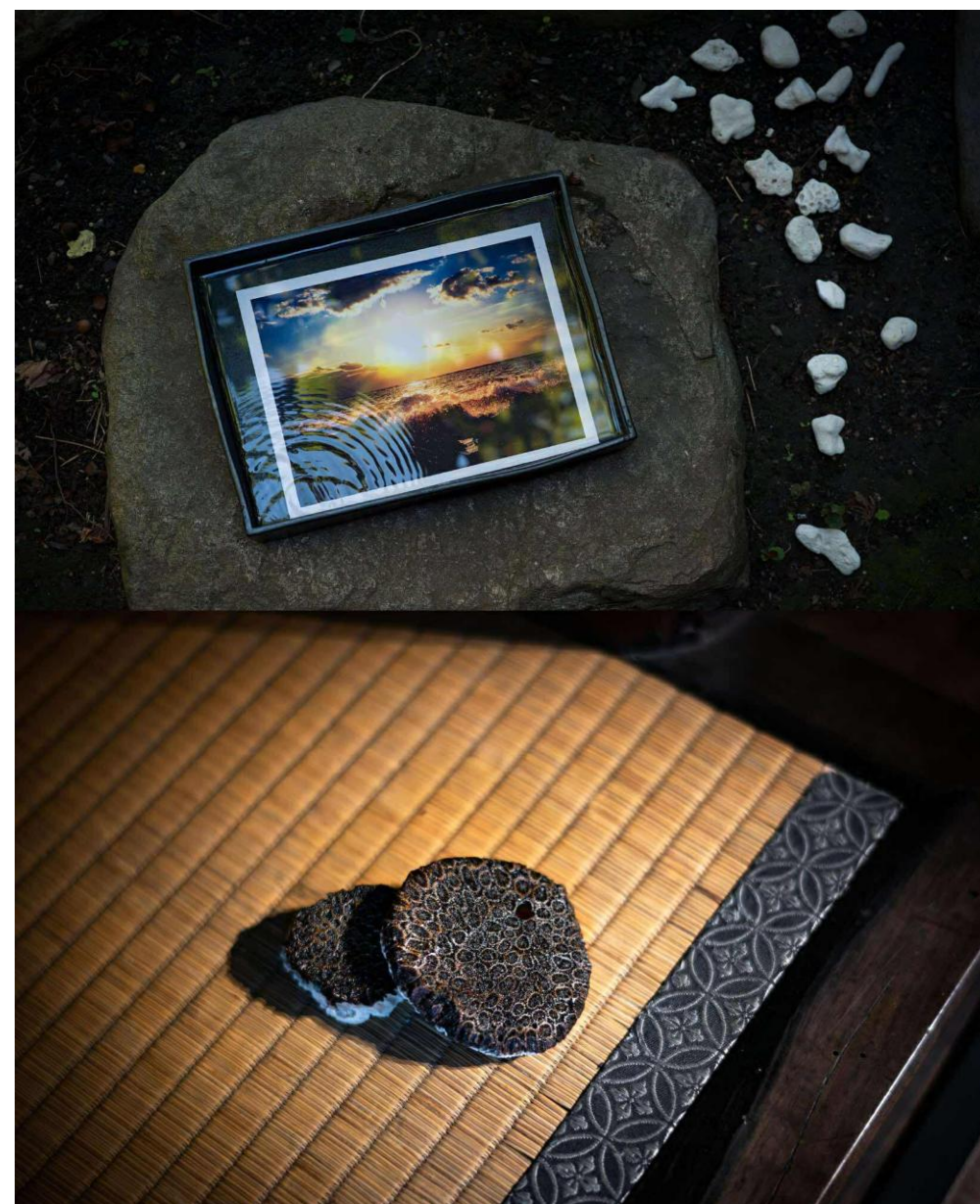
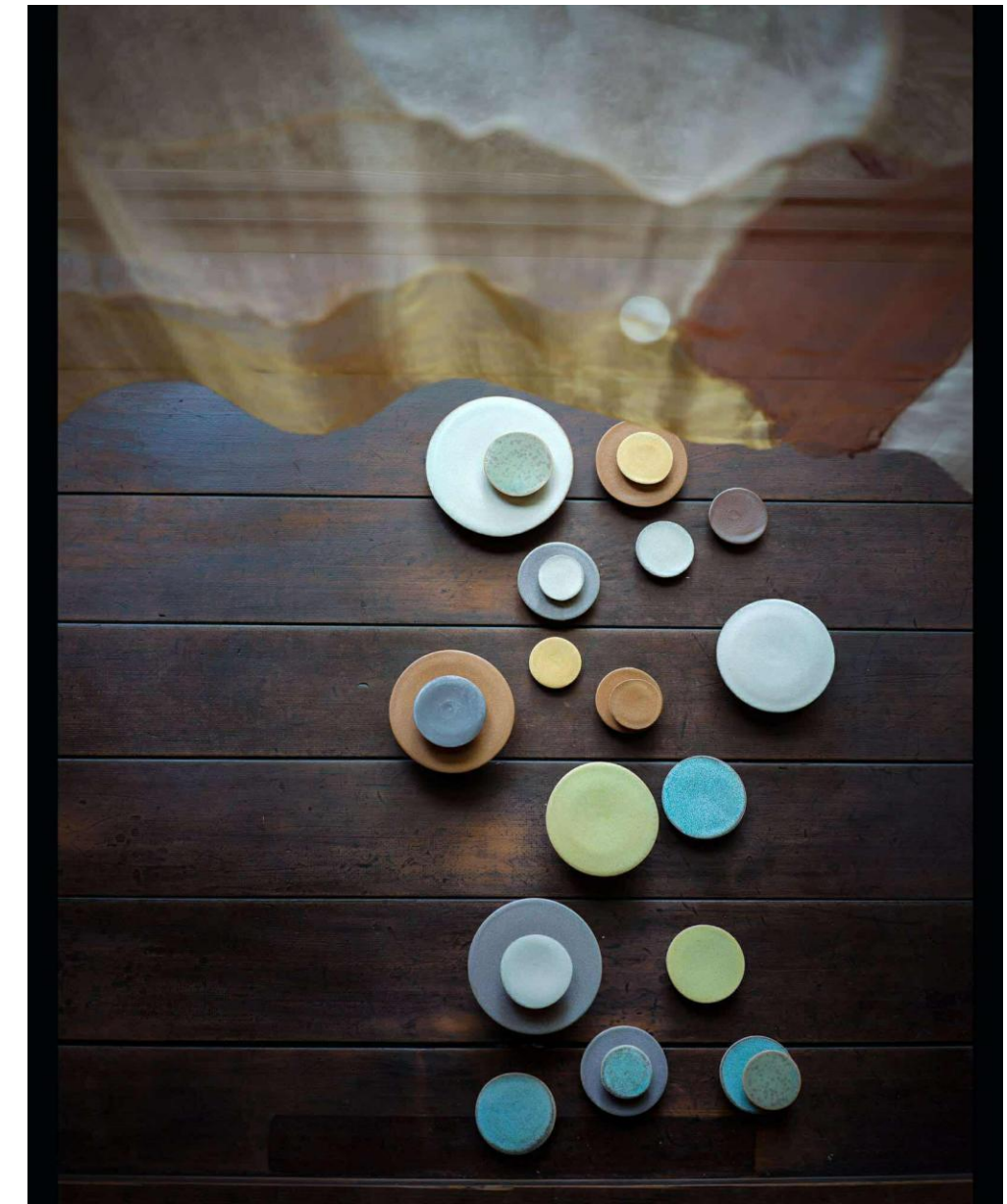
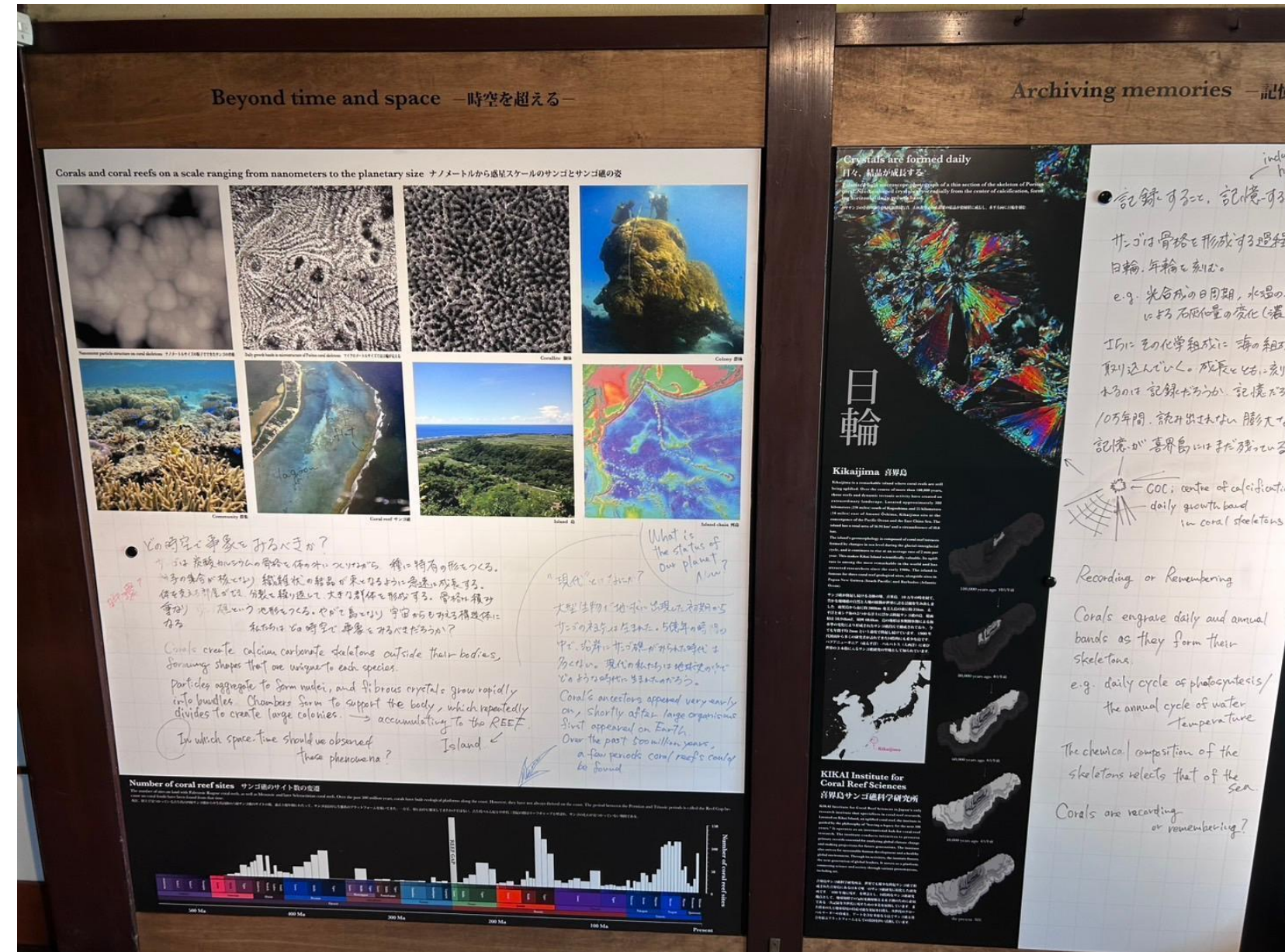
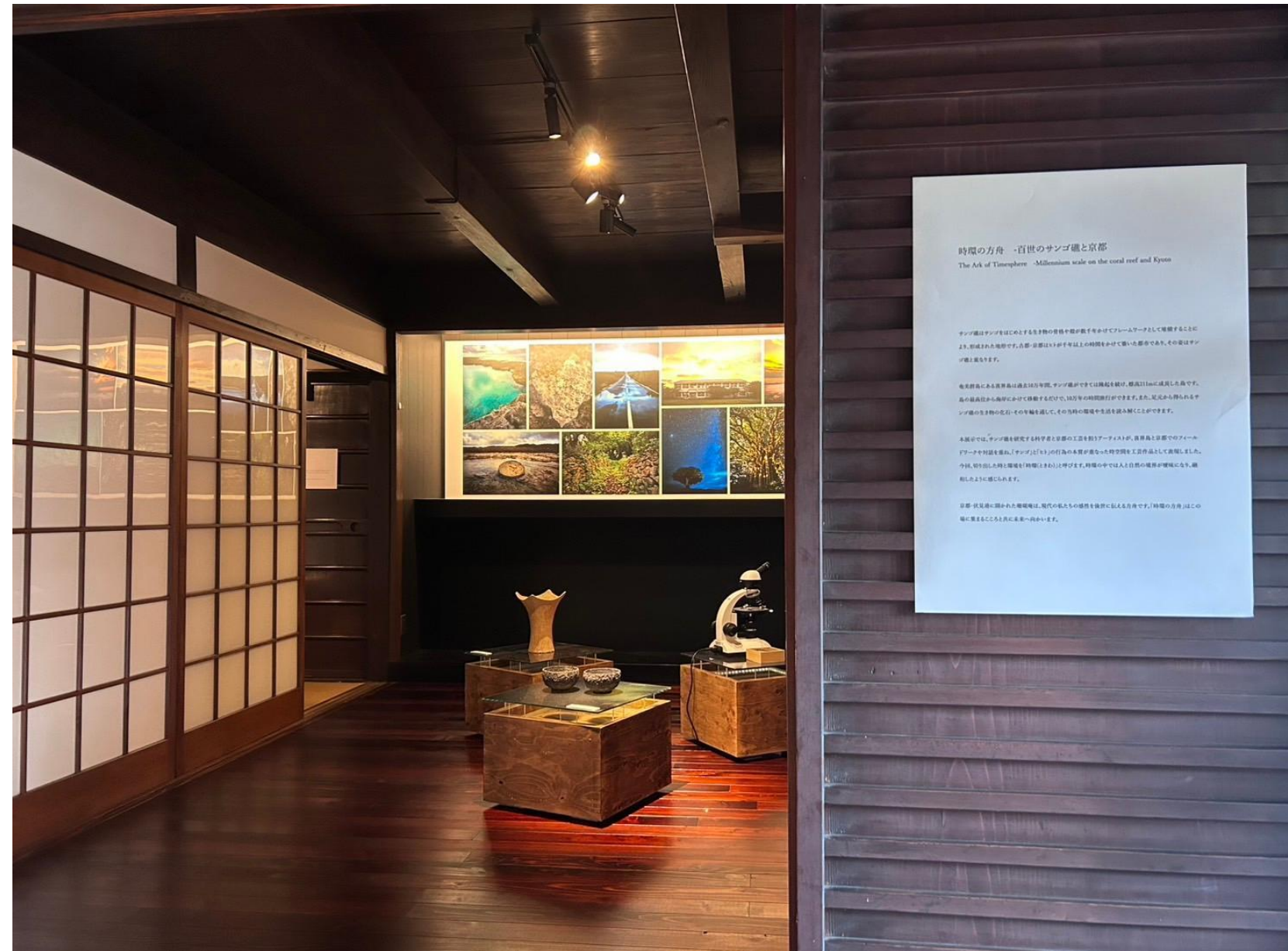
公式WEBサイト | 公式Instagram
※各イベント情報は公式サイトをご覧ください

横濱藤祭

世界が漆に出会う9日間。
Nine Days for the World
to Discover Urushi.

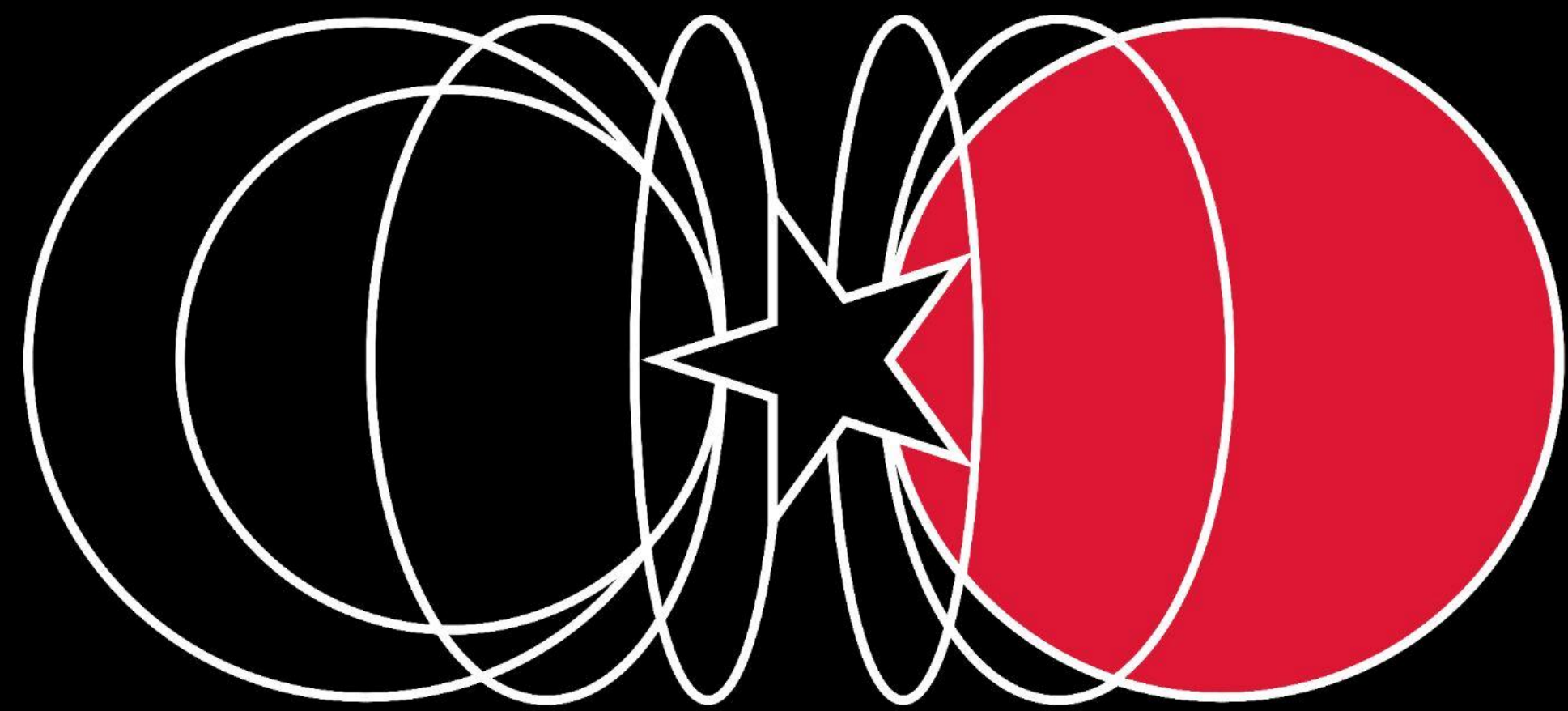
11月13日は「漆の日」。
漆祭（うるさい）では、この日をきっかけに、
漆に触れて、使って、食べて、遊ぶ、
もっと気軽にもっと楽しく
漆を楽しむ機会を作っていきます。

公式WEBサイト | 公式Instagram
※各イベント情報は公式サイトをご覧ください



「時環の方舟-百世のサンゴ礁と京都」

FROM NEAR EAST TO FAR EAST



LES BENJAMINS
1ST CRAFT WEEK
14 — 15 • 09 • 2024

百年の友情
HUNDRED YEARS OF FRIENDSHIP

EXHIBITION
LES BENJAMINS
NIŞANTAŞI MAĞAZASI
TALKS
SOHO HOUSE, ISTANBUL
FREE
LBCRAFTWEEK.COM



JAPAN
TÜRKİYE
100TH
ANNIVERSARY
OF DIPLOMATIC RELATIONS

TSUTSUMI ASAKICHI URUSHI Inc.

<トルコ>
「日本・トルコ外交関係樹立100周年記念イベント」
LES BENJAMINS 1ST CRAFT WEEK
会期：2024年9月12-15日





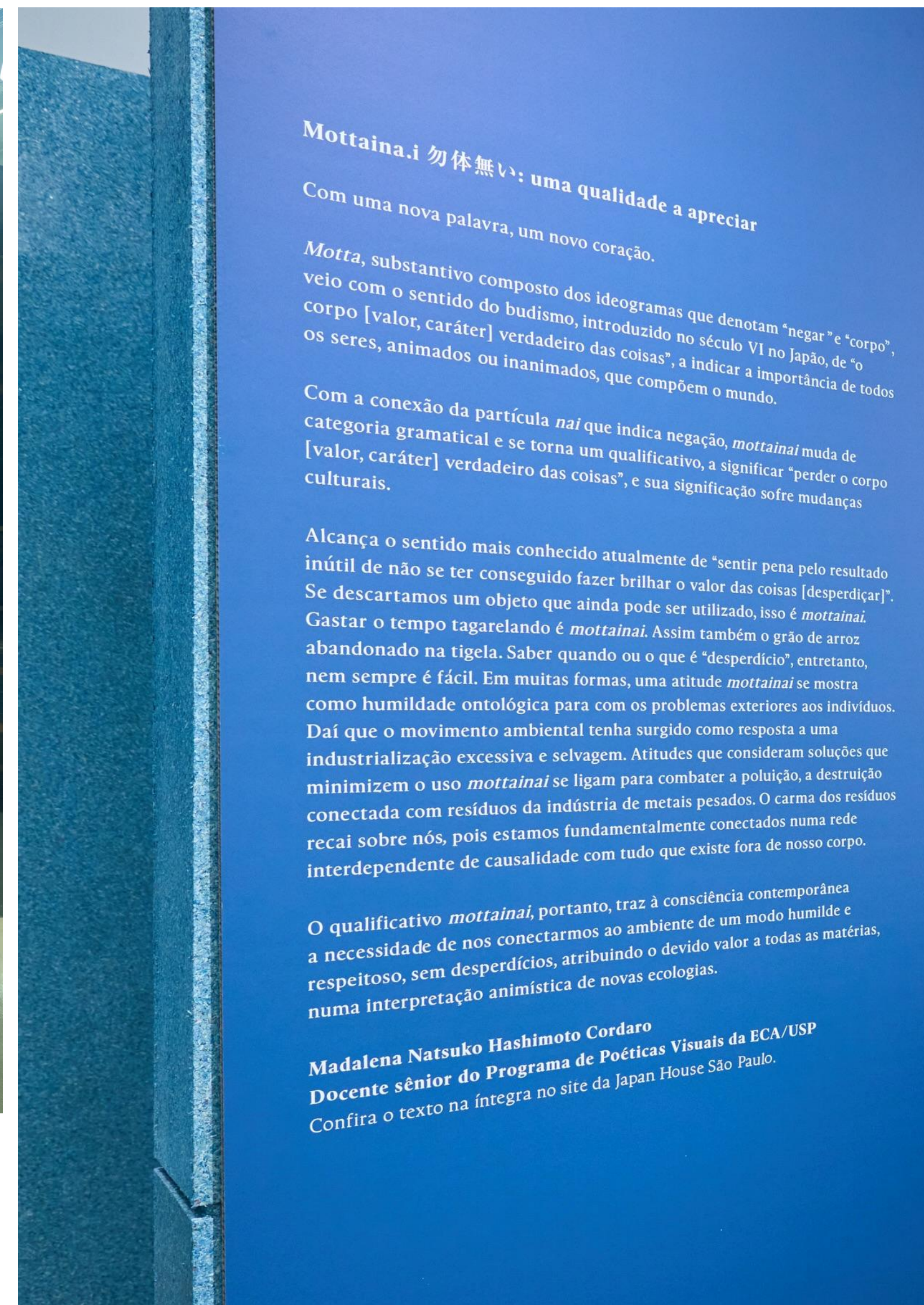


<アメリカ>
 会期：2024年11月1日～2025年1月26日
 会場：Japanese Friendship Garden San Diego



TSUTSUMI ASAKICHI URUSHI Inc.





<ブラジル>

『Japanese principles : design and resources』展

会期：2024年12月3日～2025年5月4日

会場：Japan House São Paulo



<台湾>

in InterConnected Arts/Japan EXHIBITION in TAIWAN

会期：2025年2月6日から2月16日

会場：重本書店 Weight Books





3 days of design

4 — 6 June 2025

Re:New / Japan material & Versatility Hinoki & Urushi

CD & design . SEIKI DESIGN STUDIO
Hinoki product . Tanyama Furniture
Space architecture design . share



NUANU




Living — Hands

15 June 2025
12:00 - 19:00 PM

Labyrinth Art Gallery,
Nuanu Creative City

A rare, one-day encounter with Japan's finest regenerative artisans in the heart of Bali. Witness, learn, and connect.

RSVP: +62 858 8221 9268 (Nabila)

Learn More 

Event Schedule

12:00 - 17:00

Tea Ceremony

13:00 - 15:00

• Kyoto Botanical Dye Workshop

15:00 - 16:30

Fuki-Urushi Workshop

17:00 - 18:00

Documentary Screening

18:00 - 19:00

Artist Dialogue:
"Regeneration Through Craft"

Living hands in Bali

2025/6/13-15

@Nuanu city @Bambo Inda





Expanding the Reach of Urushi

山



/suw 漆と木のストロー



アサギ椀



漆精製工房



Und.
漆の価値を伝えるプロダクトの制作・
販売、ツアーイベント



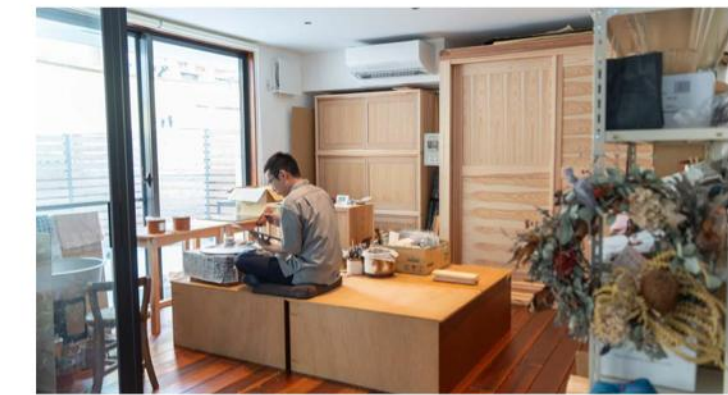
FVK

工藝の森

地域



町



Und.塗り場



ベアーズウッドPJ



若者と漆を繋ぐ



漆xPLAx3Dプリンター



漆板siiita

ウルシの木を全部使うPJ



研究と漆とアート



海外で漆の素材としての価値を広める活動



海

世界



Thank you !